

# PRODUCT LIST

A full range of standard,  
custom and specialty wipes



**Berk**  
International  
Intelligent Wiping Solutions

[www.berkwiper.com](http://www.berkwiper.com)

Issue 10.17.16



## DRC ABSORBENT WIPERS

Comparable to WYPALL L40®, WYPALL L30®

PRODUCT NUMBER	PRODUCT DESCRIPTION	CS/PLT	LBS/CS
<b>HEAVY WEIGHT</b>			
DRC-3500	12" x 13" x 1008, 1/4 Fold, 42/Dispenser Pack, White	36	19.0
DRC-3500B	12" x 13" x 1008, 1/4 Fold, 42/Dispenser Pack, Blue	36	19.0
DRC-3500-9	12" x 13" x 900, 1/4 Fold, 50/Dispenser Pack, White	42	15.5
DRC-3500P	9" x 16" x 900, Pop-up Box, 10 Box/90, White	32	21.0
DRC-3500BP	9" x 16" x 900, Pop-up Box, 10 Box/90, Blue	32	21.0
DRC-3500CP8D	9" x 12" x 220 FT, Perfed, 8 Dispenser Boxes/Case, White	16	30.5
DRC-3500B-CP8D	9" x 12" x 220 FT, Perfed, 8 Dispenser Boxes/Case, Blue	16	30.5
DRC-3500CP2	9" x 12" x 325 FT, Perfed, 2 Rolls, White	80	8.5
DRC-3500CP6	9" x 12" x 325 FT, Perfed, 6 Rolls, White	32	27.0
DRC-3500B-CP6	9" x 12" x 325 FT, Perfed, 6 Rolls, Blue	32	27.0
DRC-3500CPJ-2	12" x 12" x 750 FT, Perfed, 1 Roll, White	63	14.0
<b>MEDIUM WEIGHT</b>			
DRC-3400	12" x 13" x 1008, 1/4 Fold, 42/Dispenser Pack, White	42	14.5
DRC-3400-9	12" x 13" x 900, 1/4 Fold, 50/Dispenser Pack, White	54	14.0
DRC-3400P	9" x 16" x 900, Pop-up Box, 9 Box/100, White	32	17.0
DRC-3400CP8D	9" x 12" x 220 FT, Perfed, 8 Dispenser Boxes/Case, White	16	27.0
DRC-3400CP2	9" x 12" x 325 FT, Perfed, 2 Rolls, White	80	9.0
DRC-3400CP6	9" x 12" x 325 FT, Perfed, 6 Rolls, White	40	20.0
DRC-3400CPJ-6	12" x 12" x 950 FT, Perfed, 1 Roll, White	63	12.5
<b>LIGHT WEIGHT</b>			
DRC-3300	11.5" x 13" x 1000, 1/4 Fold, 50/Poly, White	42	14.0
DRC-3300-2	11.5" x 13" x 1100, 1/4 Fold, 50/Poly, White	42	14.6
DRC-3300-9	11.5" x 13" x 900, 1/4 Fold, 50/Poly, White	54	15.0
DRC-3300P	9" x 16" x 900, Pop-up Box, 9 Box/100, White	32	16.0
DRC-3300CP6	9" x 12" x 325 FT, Perfed, 6 Rolls, White	40	19.0
DRC-3300CPJ-2	12" x 12" x 875 FT, Perfed, 1 Roll, White	63	11.0
DRC-3300CP6-400	8" x 12" x 400 FT, Perfed, 2.5" Core, 6 Rolls, White	50	21.5
DRC-3300-KRT	11" x 9" x 140 Sheets/Roll, 12 Rolls, White	35	15.5

All DRC is available in flat pack.

DRC kitchen roll towels are available poly-wrapped for an additional cost per case.

## MONEYSAVER WIPERS

Light weight Hydro-Entangled Fiber, patterns may vary

PRODUCT NUMBER	PRODUCT DESCRIPTION	CS/PLT	LBS/CS
MW-MONEYSAVER	12" x 15" x 18 LBS, Flat, White	36	18.0
MW-MONEYSAVER-1/4	12" x 13 x 912, 1/4 Fold, 76/Dispenser Pack, White	54	11.0
MW-MONEYSAVER-P	9" x 17" x 1000, Pop Up Box, 10 Box/100, White	32	15.0
MW-MONEYSAVER-CPJ	12" x 13" x 1100 Sheets, 1 Roll, Perfed, White	54	11.0
MW-MONEYSAVER-DDB	12" x 17" x 180, Dual Dispenser Box, White	120	8.0
MW-MONEYSAVER-CP8D	9" x 12" x 220 FT, Perfed, 8 Dispenser Boxes/Case, White	16	21.0

Custom sizes and weights are available with 200 case minimum

## YELLOW DUSTING CLOTHS

Comparable to MASSLIN, CHIX STRETCH'N DUST®



PRODUCT NUMBER	PRODUCT DESCRIPTION	CS/PLT	LBS/CS
YDC-300	12" x 16" x 500 Flat, 50/Poly, Yellow	108	5.0
YDC-400	15" x 24" x 500 Flat, 50/Poly, Yellow	56	9.0
YDC-500	17" x 24" x 500 Flat, 50/Poly, Yellow	56	10.5
YDC-600	23" x 24" x 500 Flat, 50/Poly, Yellow	48	12.0
YDC-700	24" x 39" x 250 Flat, 50/Poly, Yellow	48	13.0

Orange Dot Dusters are also available.

**Contact your sales person for free samples and pricing 866-222-BERK**

Visit us at [www.BerkWiper.com](http://www.BerkWiper.com) to view our complete line of wiping products



## MIGHTYWIPE® LOW LINT WIPERS

Comparable to WYPALL® X80, X70, X60

PRODUCT NUMBER	PRODUCT DESCRIPTION	CS/PLT	LBS/CS
<b>MIGHTYWIPE® HEAVY WEIGHT WHITE</b>			
MW-80-1/4	12" x 13" x 200, 1/4 Fold, 50/Dispenser Pack, White	108	6.0
MW-80-P	9" x 17" x 400, Pop-up, 8 Box/50 White	50	13.5
MW-80-CPJ	12" x 12" x 475 Sheets, 1 Roll, Perfed, White	63	13.5
MW-80-DDB	12" x 17" x 160, Dual Dispenser Box, White	120	6.0
<b>MIGHTYWIPE® HEAVY WEIGHT BLUE</b>			
MW-80B-1/4	12" x 13" x 200, 1/4 Fold, 50/Dispenser Pack, Blue	108	6.0
MW-80B-P	9" x 17" x 400, Pop-up, 8 Box/50, Blue	50	13.5
MW-80B-CPJ	12" x 12" x 475 Sheets, 1 Roll, Perfed, Blue	63	13.5
MW-80B-DDB	12" x 17" x 160, Dual Dispenser Box, Blue	120	6.0
<b>MIGHTYWIPE® HEAVY WEIGHT RED</b>			
MW-80R-1/4	12" x 13" x 200, 1/4 Fold, 50/Dispenser Pack, Red	108	6.0
MW-80R-P	9" x 17" x 400, Pop-up, 8 Box/50, Red	50	14.5
MW-80R-CPJ	12" x 12" x 475 Sheets, 1 Roll, Perfed, Red	63	12.5
MW-80R-DDB	12" x 17" x 160, Dual Dispenser Box, Red	120	6.0
<b>MIGHTYWIPE® MEDIUM WEIGHT WHITE</b>			
MW-70-1/4	12" x 13" x 912, 1/4 Fold, 57/Dispenser Pack	54	13.5
MW-70-P	9" x 17" x 1000, Pop-up, 10 Box/100	32	18.0
MW-70-CP-3	9" x 12" x 275 Sheets, 3 Rolls, Perfed	56	8.5
MW-70-CPJ-2	12" x 12" x 875 FT, 1 Roll, Perfed	63	13.0
MW-70-DDB	12" x 17" x 150, Dual Dispenser Box	120	3.5
MW-70-CP8D	9" x 12" x 220 FT, Perfed, 8 Dispenser Boxes/Case	16	24.5
<b>MIGHTYWIPE® LIGHT WEIGHT WHITE</b>			
MW-60-1/4	12" x 13" x 912, 1/4 Fold, 76/Dispenser Pack	54	14.5
MW-60-P	9" x 17" x 1000, Pop-up, 10 Box/100	32	15.0
MW-60P-5	8.5" x 12.5" x 1400, Pop-up, 10 Box/140	36	18.0
MW-60P-1	9" x 17" x 1260, Pop-up, 10 Box/126	32	18.0
MW-60-CP-3	9" x 12" x 250 FT, 3 Rolls, Perfed	56	12.0
MW-60-CPJ-1	12" x 12" x 1100 Sheets, 1 Roll, Perfed	63	11.0
MW-60-DDB-1	12" x 17" x 180, Dual Dispenser Box	120	8.0
MW-60-CP8D	9" x 12" x 220 FT, Perfed, 8 Dispenser Boxes/Case	16	21.0



## AIRLAID INDUSTRIAL WIPERS

PRODUCT NUMBER	PRODUCT DESCRIPTION	CS/PLT	LBS/CS
AIR MEDIUM LE-9	12" x 13" x 900, 1/4 Fold, 50/Poly, White	54	16.0
AIRMEDIUMLE-CP6	8" x 12" x 400 FT, 6 Rolls, Perfed, White (SUB FOR MERFIN 8400)	50	21.5
AIRMEDIUMFBLK	12" x 15" x 18 LBS, Flat, White	25	18.0



## SPUNLACE LOW LINT WIPERS

PRODUCT NUMBER	PRODUCT DESCRIPTION	CS/PLT	LBS/CS
<b>BLUE CREPED</b>			
SPUN-4000	12" x 13" x 500, 1/4 Fold, 50/Dispenser Pack, Creped, Blue	72	9.0
SPUN-4000FBLK13	12" x 13" x 500, Flat Bulk, Creped, Blue	72	9.0
SPUN-4000-18	13" x 18" x 250, 1/4 Fold, Dispenser Box, Creped, Blue	120	5.5
SPUN-4000P	9" x 17" x 600, Pop-up, 6 Box/100, Creped, Blue	60	11.5
SPUN-4000CP	9" x 12" x 325 FT, 2 Rolls, Perfed, Creped, Blue	80	9.0
SPUN-4000CRUMP1	12" x 18" x 250, Crumple Creped, Blue	54	3.7
<b>BLUE SMOOTH</b>			
SPUN-4100	12" x 13" x 500, 1/4 Fold, 50/Dispenser Pack, Smooth, Blue	72	9.0
SPUN-4100FBLK5	12" x 13" x 500, Flat Bulk, Smooth, Blue	72	9.5
SPUN-4100P	9" x 17" x 600, Pop-up, 6 Box/100, Smooth, Blue	60	16.0
<b>WHITE CREPED</b>			
SPUN-4200	12" x 13" x 500, 1/4 Fold, 50/Dispenser Pack, Creped, White	72	9.0
SPUN-4200-18	13" x 18" x 250, 1/4 Fold, Dispenser Box, Creped, White	120	7.0
SPUN-4200P	9" x 17" x 600, Pop-up, 6 Box/100, Creped, White	60	11.5
SPUN-4200CP	9" x 12" x 325 FT, 2 Rolls, Perfed, Creped, White	80	8.0
<b>WHITE SMOOTH</b>			
SPUN-4300	12" x 13" x 500, 1/4 Fold, 50/Dispenser Pack, Smooth, White	72	9.0
SPUN-4300-18	13" x 18" x 250, 1/4 Fold, Dispenser Box, Smooth, White	120	7.0
SPUN-4300P	9" x 17" x 600, Pop-up, 6 Box/100, Smooth, White	60	17.0

Contact your sales person for free samples and pricing 866-222-BERK

Visit us at [www.BerkWiper.com](http://www.BerkWiper.com) to view our complete line of wiping products



## SCRIM REINFORCED WIPERS

2-ply and 4-ply

PRODUCT NUMBER	PRODUCT DESCRIPTION	CS/PLT	LBS/CS
SCR-1200BT-5	14" x 36" x 300 Flat, 2-Ply, White	120	12.0
SCR-1200H	12.375" x 13" x 900 1/4 Fold, 50/Dispenser Pack, 2-Ply, Heavy, White	72	18.0
SCR-1200HFBULK	12.375" x 13" x 900 Flat, Bulk, 2-Ply, Heavy, White	72	14.0
SCR-1200HP	9" x 17" x 900 Pop-up, 6 Box/150, 2-Ply, Heavy, White	60	14.0
SCR-1400	12" x 13" x 900 1/4 Fold, 50/Dispenser Pack, 4-Ply, White	54	13.5
SCR-1400FBLK-11	12" x 13" x 900 Flat, Bulk, 4-Ply, White	54	16.0
SCR-1400P	9" x 17" x 900 Pop-up, 6 Box/150, 4-Ply, White	60	15.0

All Scrim is available in blue, call for quotes.

## SCRIM REINFORCED WIPERS ON A ROLL

Non-Perforated

PRODUCT NUMBER	PRODUCT DESCRIPTION	CS/PLT	LBS/CS
SCR-5000B	9.5" x 275 FT, 6 Rolls, 4-Ply, Blue	64	16.5
SCR-5100	9.5" x 275 FT, 6 Rolls, 4-Ply, White	64	19.0
SCR-5300	19.5" x 275 FT, 4 Rolls, 4-Ply, White	48	25.0
SCR-5500	9.5" x 1500 FT, 1 Roll, 4-Ply, White	72	25.0



## SCRIM CONTINUOUS ROLL TOWELS

PRODUCT NUMBER	PRODUCT DESCRIPTION	CS/PLT	LBS/CS
SCR-1400-CRT	9.5" x 120 FT, 12 Rolls, 4-Ply, White	64	18.0
SCR-1400-CRT-B	9.5" x 120 FT, 12 Rolls, 4-Ply, Blue	64	18.0

## POLYTEX

Polypropylene Wiper



PRODUCT NUMBER	PRODUCT DESCRIPTION	CS/PLT	LBS/CS
POLYTEX-1/4	12" x 13" x 500, 1/4 Fold, 50/Poly, Blue	72	9.0
POLYTEX-EMB-1/4	12" x 13" x 500, 1/4 Fold, 50/Poly, Embossed Blue	72	9.0
POLYTEX-P	9" x 17" x 500, Pop-up, 5 Box/100, Blue	60	9.0
POLYTEX-CPJ	9" x 12" x 800 FT, 1 Roll, Perfed, Blue	72	9.0
POLYTEX-DDB-1	12" x 17" x 180, Dual Dispenser Box, Blue	120	10.0

Two embossing patterns are available.

## CHEMWIPE® BUCKET WIPER DISPENSING SYSTEM

Comparable to Kimberly Clark KIMTECH® WETTASK®

Add your own chemical solution for a pre-moistened wipe.



PRODUCT NUMBER	PRODUCT DESCRIPTION	CS/PLT	LBS/CS
MW-60-CP-CHEMWIPE	12" x 12" x 90 1/2 Folded Sheets, 6 Rolls, Perfed	84	6.0
MW-60-CP-CHEMWIPE-1B	12" x 12" x 90 1/2 Folded Sheets, 6 Rolls, Perfed, 1 Bucket	63	6.5
MW-70-CP-CHEMWIPE-IND	9" x 12" x 275 Sheets, 3 Rolls, Perfed	84	5.5
MW-70-CP-CHEMWIPE-IND-1B	9" x 12" x 275 Sheets, 3 Rolls, Perfed, 1 Bucket	63	6.0

Additional buckets are available upon request.

## TECHWIPE® LENS TISSUE

Comparable to KIMTECH® 34155, 34256

Delicate task cleaning wipes



PRODUCT NUMBER	PRODUCT DESCRIPTION	CS/PLT	LBS/CS
TECHWIPE	4" x 8" x 16800, Pop-up Box, 60 Boxes/280, White	30	26.5
TECHWIPE-XL	15" x 17" x 2100, Pop-up Box, 15 Boxes/140, White	45	19.0

Contact your sales person for free samples and pricing 866-222-BERK

Visit us at [www.BerkWiper.com](http://www.BerkWiper.com) to view our complete line of wiping products



## CUTNDRY® TAD UTILITY WIPES

Light duty wiping

PRODUCT NUMBER	PRODUCT DESCRIPTION	CS/PLT	LBS/CS
CUTNDRY1000P	8.5" x 10.5" x 2250, Pop-up, 18 Box/125, White	56	13.5

## ADVANTAGE BLUE PLUS WIPER

Comparable to Tork MEKANIC®

Heavy duty embossed

PRODUCT NUMBER	PRODUCT DESCRIPTION	CS/PLT	LBS/CS
ADV-BLUEPLUS-CP	11" x 12" x 500 FT, 2 Rolls, Perfed, Multi-Ply, Blue	56	13.5



## WINDSHIELD TOWELS

Banded/Interfolded

PRODUCT NUMBER	PRODUCT DESCRIPTION	CS/PLT	LBS/CS
WT-1000B-5	10.5" x 9.5" x 2250, 9/250, 1-Ply, Blue	62	14.0
WT-1000B-6	10.5" x 9.5" x 2250, 9/250, 2-Ply, Blue	50	19.8



## THE KNIT®

Comparable to MDI The Stitch®

PRODUCT NUMBER	PRODUCT DESCRIPTION	CS/PLT	LBS/CS
THE KNIT-BAR TOWEL	13" x 17" x 150, 1/4 Fold, Diecut Box	120	5.0

## FITNESS WIPE

Dispensers and buckets are available

PRODUCT NUMBER	PRODUCT DESCRIPTION	CS/PLT	LBS/CS
FITNESS WIPE	8" x 6" x 1750 Wipes, 2 Rolls/Case, Perfed, Pre-moistened, White	50	23.0





## CHEF'S SELECT® FOOD SERVICE TOWELS

### MEDIUM WEIGHT

PRODUCT NUMBER	PRODUCT DESCRIPTION	CS/PLT	LBS/CS
FST-2500P/W-1	13" x 19.7" x 200, 1/4 Fold, Pink & White	120	3.0
FST-2500B/W-1	13" x 19.7" x 200, 1/4 Fold, Blue & White	120	3.0
FST-2500G/W-2	13" x 19.7" x 200, 1/4 Fold, Green & White	120	3.0

### PREMIUM HEAVY WEIGHT

PRODUCT NUMBER	PRODUCT DESCRIPTION	CS/PLT	LBS/CS
FST-3000B	13" x 21" x 150, 1/4 Fold, Blue	120	4.5
FST-3000W	13" x 21" x 150, 1/4 Fold, White	120	3.5
FST-3000W-RS	13" x 21" x 150, 1/4 Fold, White with Red Stripe	120	3.5
FST-3000PIZZA	13" x 21" x 150, 1/4 Fold, Pizza	120	5.0
FST-3000Y	13" x 21" x 150, 1/4 Fold, Yellow	120	4.0
FST-3000G-ANTI	13" x 21" x 150, 1/4 Fold, Antimicrobial, Green	120	4.0
MW-70-FST	13" x 21" x 300, 1/4 Fold, Dispenser Box, White	72	8.0
THE KNIT BAR TOWEL	13" x 17" x 150, 1/4 Fold, Die Cut Box	120	5.0



## CHEF'S SELECT® FOOD FRESH LINERS

Keeps takeout food restaurant fresh

PRODUCT NUMBER	PRODUCT DESCRIPTION	CS/PLT	LBS/CS
FF-125	8" x 7" x 125 Pieces, White	480	1.5
FF-250	8" x 7" x 250 Pieces, White	280	3.0
FF-625	8" x 7" x 625 Pieces, White	90	8.5
FF-1250	8" x 7" x 1250 Pieces, White	45	15.5

Contact your sales person for free samples and pricing 866-222-BERK

Visit us at [www.BerkWiper.com](http://www.BerkWiper.com) to view our complete line of wiping products

## CHEF'S SELECT® LINEN REPLACEMENT GUEST TOWELS

PRODUCT NUMBER	PRODUCT DESCRIPTION	CS/PLT	LBS/CS
<b>AIRLAY</b>			
AIRMEDLE-GT6	12" x 16" x 500/50, 1/6 Fold, Linen Replacement Guest Towel, White	54	7.5
AIRMEDLE-GT8	15" x 16" x 500/50, 1/8 Fold, Linen Replacement Guest Towel, White	54	10.0
<b>DRC</b>			
DRC-3300-GT6	12" x 16" x 500/50, 1/6 Fold, Linen Replacement Guest Towel, White	54	8.5
DRC-3300-GT8	15" x 16" x 500/50, 1/8 Fold, Linen Replacement Guest Towel, White	54	11.0
<b>SPUNLACE</b>			
FLUFFSPUN-GT6	12" x 16" x 500/50, 1/6 Fold, Linen Replacement Guest Towel, White	54	11.0
FLUFFSPUN-GT8	15" x 16" x 500/50, 1/8 Fold, Linen Replacement Guest Towel, White	54	13.5



## CHEF'S SELECT® LINEN REPLACEMENT NAPKINS

PRODUCT NUMBER	PRODUCT DESCRIPTION	CS/PLT	LBS/CS
<b>AIRLAY</b>			
AIRMEDLENPKN-5	15" x 15" x 1000, Flat, Bulk, Linen Replacement Napkin, White	45	19.0
<b>DRC</b>			
DRC-3300NPKN-4	15" x 15" x 1000, Flat, Bulk, Linen Replacement Napkin, White	45	19.0
DRC-3300NPKN	15" x 16" x 1000, Flat, Bulk, Linen Replacement Napkin, White	45	20.5
<b>SPUNLACE</b>			
FLUFF SPUNLACE	15" x 15" x 1000, Flat, Bulk, Linen Replacement Napkin, White	45	14.0
<b>TAD</b>			
ECONOLINENNPKN	16" x 16" x 1000, Flat, Bulk, Linen Replacement Napkin, White	40	12.5

Ask about our dispenser program

**Contact your sales person for free samples and pricing 866-222-BERK**  
Visit us at [www.BerkWiper.com](http://www.BerkWiper.com) to view our complete line of wiping products



## CUTNDRY® WIPERS

Comparable to Georgia Pacific enMotion®

PRODUCT NUMBER	PRODUCT DESCRIPTION	CS/PLT	LBS/CS
CUTNDRY 10"	10" x 8" DIA, 2" Core, 6 Rolls, Non-perfed	45	23.0
CUTNDRY 10" SAVER	10" x 550 FT, 2" Core, 6 Rolls, Non-perfed	45	22.0
CUTNDRY 8"	8" x 8" DIA, 2" Core, 6 Rolls, Non-perfed	50	17.0
CUTNDRY 8" SAVER	8" x 550 FT, 2" Core, 6 Rolls, Non-perfed	50	15.5
CUTNDRY-275-CP	8" x 12" x 275 FT, 3" Core, 8 Rolls, Perfed	50	11.0
CUTNDRY-400-CP	8" x 12" x 400 FT, 3" Core, 6 Rolls, Perfed	50	11.0
CUTNDRY-600-CP	8" x 12" x 600 FT, 3" Core, 6 Rolls, Perfed	50	14.0
CUTNDRY-700-CP	8" x 12" x 700 FT, 3" Core, 6 Rolls, Perfed	36	17.0
CUTNDRY-KRT	11" x 9" x 250 Sheets, 1.8" Core, 10 Rolls, Perfed	48	14.0
CUTNDRY 1000P	8.5" x 10.5" x 2250 Pop-up, 18 Box/125	48	13.0

Look for the blue and white box with the black band!

Ask about our free CUTNDRY® dispenser program



## CENTERPULL ROLL TOWELS

(1-ply and 2-ply Hand Drying Towels)

PRODUCT NUMBER	PRODUCT DESCRIPTION	CS/PLT	LBS/CS
CPRT-7000-1	7.8" x 12" x 1000 FT, 6 Rolls, 1-Ply, Perfed	50	19.0
CPRT-7100	9" x 12" x 1000 FT, 2 Rolls, 2-Ply, Perfed	64	12.5
CPRT-7200-15	7.8" x 12" x 265 FT, 12 Rolls, 2-Ply	50	17.0
CPRT-7200-4	7.8" x 12" x 500 FT, 6 Rolls, 2-Ply, Perfed	50	16.0
CPRT-7200-3	7.8" x 12" x 600 FT, 6 Rolls, 2-Ply, Perfed	50	20.0
CPRT-7200-13	7.8" x 12" x 660 FT, 6 Rolls, 2-Ply, Perfed	50	21.0
CPRT-7200	9" x 12" x 500 FT, 6 Rolls, 2-Ply, Perfed	45	18.0
CPRT-7200-6	9" x 12" x 600 FT, 6 Rolls, 2-Ply, Perfed	45	22.0
CPRT-7200-ECONO	7.5" x 9" x 600 Sheets, 6 Rolls, 2-Ply, Perfed	50	18.5
CPRT-7200-ECONO-1	7.5" x 9" x 535 Sheets, 6 Rolls, 2-Ply, Perfed	50	16.5
ELEPHANT ROLL-M	10" x 4750 FT, 1 Roll, Non-perfed	40	30.0
CUTNDRY-275-CP	8" x 12" x 275 FT, 3" Core, 8 Rolls, Perfed	50	11.0
CUTNDRY-400-CP	8" x 12" x 400 FT, 3" Core, 6 Rolls, Perfed	50	11.0
CUTNDRY-600-CP	8" x 12" x 600 FT, 3" Core, 6 Rolls, Perfed	50	14.0
CUTNDRY-700-CP	8" x 12" x 700 FT, 3" Core, 6 Rolls, Perfed	36	17.0

Custom perforation lengths, core sizes and roll lengths available upon request.

**Contact your sales person for free samples and pricing 866-222-BERK**

Visit us at [www.BerkWiper.com](http://www.BerkWiper.com) to view our complete line of wiping products



## HARDWOUND ROLL TOWELS

Non-Perforated Rolls, White, Brown and Blue Hand Drying Towels

PRODUCT NUMBER	PRODUCT DESCRIPTION	CS/PLT	LBS/CS
HWRT-BR-350	7.7" x 350 FT, 1.8" Core, 12 Rolls, Brown	50	21.5
HWRT-BR-600	7.7" x 600 FT, 1.8" Core, 12 Rolls, Brown	30	34.0
HWRT-BR-800	7.7" x 800 FT, 1.8" Core, 12 Rolls, Brown	25	47.0
HWRT-BR-800-1	7.7" x 800 FT, 1.8" Core, 6 Rolls, Brown	50	22.0
HWRT-BR-10"	10" x 800 FT, 1.8" Core, 6 Rolls, Brown	45	32.0
HWRT-WT-350	7.75" x 350 FT, 1.8" Core, 12 Rolls, White	50	26.0
HWRT-WT-600	7.75" x 600 FT, 1.8" Core, 12 Rolls, White	30	33.5
HWRT-WT-800	7.75" x 800 FT, 1.8" Core, 12 Rolls, White	25	43.0
HWRT-WT-800-1	7.75" x 800 FT, 1.8" Core, 6 Rolls, White	50	22.0
HWRT-WT-1000	8" x 1000 FT, 1.5" Core, 6 Rolls, Premium White	50	28.0
HWRT-WT-1000-2	8" x 1000 FT, 1.5" Core, 12 Rolls, Premium White	25	59.0
HWRT-WT-10"	10" x 800 FT, 1.8" Core, 6 Rolls, White	45	33.0
HWRT-BL-800	8" x 800 FT, 1.8" Core, 6 Rolls, Blue	50	22.0
HWRT-BL-800-1	8" x 7.75" DIA, 1.8" Core, 12 Rolls, Blue	25	50.0

Custom core sizes and roll lengths are available upon request.



## JUNIOR/JUMBO BATHROOM TISSUE

### 1-PLY BATHROOM TISSUE

PRODUCT NUMBER	PRODUCT DESCRIPTION	CS/PLT	LBS/CS
JUNIOR BT13333	3.3" x 9" DIA, 1500 FT, 3.3" Core, 12 Rolls, 1-Ply	48	20.0
JUNIOR BT13633	3.6" x 9" DIA, 1500 FT, 3.3" Core, 12 Rolls, 1-Ply	48	19.0
JUMBO BT13333	3.3" x 12" DIA, 3000 FT, 3.3" Core, 6 Rolls, 1-Ply	48	20.0
JUMBO BT13633	3.6" x 12" DIA, 3000 FT, 3.3" Core, 6 Rolls, 1-Ply	48	21.0

### 2-PLY BATHROOM TISSUE

PRODUCT NUMBER	PRODUCT DESCRIPTION	CS/PLT	LBS/CS
JUNIOR BT23336	3.3" x 8.5" DIA, 500 FT, 3.6" Core, 12 Rolls, 2-Ply	46	14.0
JUNIOR BT23333-1	3.3" x 8.75" DIA, 650 FT, 3.3" Core, 12 Rolls, 2-Ply	46	18.0
JUNIOR BT23333	3.3" x 9" DIA, 700 FT, 3.3" Core, 12 Rolls, 2-Ply	46	17.5
JUNIOR BT23333-3	3.3" x 1000 FT, 3.3" Core, 12 Rolls, 2-Ply	46	22.5
JUNIOR BT23633	3.6" x 9" DIA, 700 FT, 3.3" Core, 12 Rolls, 2-Ply	48	19.5
JUNIOR BT23633-1	3.6" x 1000 FT, 3.3" Core, 12 Rolls, 2-Ply	48	24.0
JUMBO BT23333	3.3" x 1500 FT, 3.3" Core, 6 Rolls, 2-Ply	48	17.5
JUMBO BT23633	3.6" x 1500 FT, 3.3" Core, 6 Rolls, 2-Ply	42	16.0
BATH T2375-CRLS	3.75" x 4" x 900 Sheets, 5.2" DIA, 36 Rolls, 2-Ply, Coreless	35	19.0
TT-8400	3.8" x 4.5" x 500 Roll, 96 Rolls/Case, 2-Ply	20	35.0

- Custom core sizes and footages are available upon request \*minimums apply\*
- Ask about our EDEN SOFT® Brand Bath Tissue

**Contact your sales person for free samples and pricing 866-222-BERK**

Visit us at [www.BerkWiper.com](http://www.BerkWiper.com) to view our complete line of wiping products





## DISPOSABLE WASHCLOTHS

Ask about our Human Care® brand

PRODUCT NUMBER	PRODUCT DESCRIPTION	CS/PLT	LBS/CS
<b>DRC WASHCLOTHS</b>			
DRC-3300-3	11.5" x 13" x 800, 1/4 Fold, 50/Dispenser Pack, White	72	10.8
DRC-3300-2	11.5" x 13" x 1100, 1/4 Fold, 50/Dispenser Pack, White	42	14.6
DRC-3300-13	10" x 11.5" x 800, 1/4 Fold, 50/Dispenser Pack, White	54	9.0
DRC-3400-14	10" x 11.875" x 800, 1/4 Fold, 50/Dispenser Pack, Medium Weight, White	54	10.0
<b>AIRLAID WASHCLOTHS</b>			
AIR MEDIUM LE	11.5" x 13" x 800, 1/4 Fold, 50/Dispenser Pack, Airlay, White	54	9.8
AIR MEDIUM LE17	10" x 11.5" x 800, 1/4 Fold, 50/Dispenser Pack, Airlay, White	72	8.0
<b>HYDROCELL WASHCLOTHS</b>			
MW-60-1/4-4	12" x 13" x 800, 1/4 Fold, 50/Dispenser Pack, Hydro-Entangled, White	54	12.7
<b>SPUNLACE WASHCLOTHS</b>			
SPUN-4200S1ST	12" x 13" x 800, 1/4 Fold, 50/Dispenser Pack, Spunlace, Plain Box, White	54	7.6
<b>FLUFF SPUNLACE WASHCLOTHS</b>			
FLUFF SPUNLACE	9" x 13" x 800, 1/4 Fold, 50/Dispenser Pack, White	72	10.8
FLUFF SPUNLACE-2	12" x 13" x 800, 1/4 Fold, 50/Dispenser Pack, White	42	11.0

Excellent truckload pricing for hospitals and nursing homes.

## DISPENSERS

Let us design a dispenser program for you, call for competitive pricing.

PRODUCT NUMBER	PRODUCT DESCRIPTION
DISP-CUTNDRY	1 PULL 1 SIZE 10 IN DISPENSER
DISP-CUTNDRY8	1 PULL 1 SIZE 8 IN DISPENSER
DISP-CUTNDRY10E	10 IN ELECTRONIC DISPENSER
DISP-CUTNDRY8E	8 IN ELECTRONIC DISPENSER
DISP-CP-MED	MEDIUM CENTERPULL DISPENSER
DISP-CP-LG	LARGE CENTERPULL DISPENSER
DISP-JRT-DUAL	DUAL 9 IN JUNIOR TISSUE DISPENSER
DISP-JBT	JUMBO 12 IN TISSUE DISPENSER
DISP-HWRT	HARDWOUND ROLL TOWEL DISPENSER
DISP-CRT	CONTINUOUS ROLL TOWEL DISPENSER
DISP-JUMBORLFL	JUMBO ROLL FLOOR STAND DISPENSER
DISP-JUMBORLWL	JUMBO ROLL WALL MOUNT DISPENSER
DISP-NAP-WM	WALL MOUNT NAPKIN DISPENSER
DISP-NAP-TT	TABLETOP NAPKIN DISPENSER
DISP-NAP-CT	COUNTERTOP NAPKIN DISPENSER



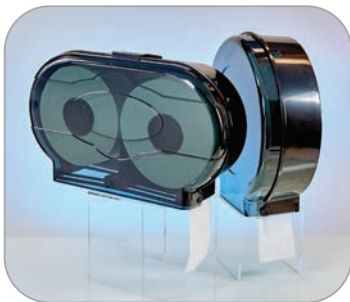
CUTNDRY® Dispenser



Hardwound Roll Towel Dispenser



Centerpull Dispenser



Dual Junior Tissue Dispenser



Dispense-A-Nap® Dispensers



Jumbo Roll  
Floor Stand Dispenser



Continuous Roll Towel  
Dispenser

400 East 2nd Street | Boyertown, PA 19512  
Phone: (610) 369.0600 | Toll Free: (866) 222.BERK | Fax: (610) 369.0676

[www.BerkWiper.com](http://www.BerkWiper.com)

